

Master Plan Update

Program and Space Analysis

Mt. Vernon Square Campus
Van Ness Campus

Prepared for:
Board of Trustees,
University of the
District of Columbia

Campus Planning, Building
& Grounds Committee

24 August 1977

University Of
The District
Of Columbia
Washington, D.C.

Caudill Rowlett Scott
Architects Planners Engineers
Houston, Texas

INTRODUCTION

In 1974, Public Law 93-471 (93rd Congress) was enacted. A major objective of this legislation was:

"To reorganize public post secondary education in the District of Columbia, establish a Board of Trustees, authorize and direct the Board of Trustees to consolidate the existing local institutions of public post secondary education into a single Land Grant University of the District of Columbia, direct the Board of Trustees to administer the University of the District of Columbia and for other purposes."

Subsequently, the Council of the District of Columbia expressed its intent

". . . to approve the Congressional intent expressed in Section 102 of the District of Columbia post secondary education reorganization act (DC Code Sections 31-1701) to authorize a public Land Grant University through the reorganization of the existing local institutions of public post secondary education in the District of Columbia." [DC Law 1-36 (Amendment to P.L. 93-471) Effective November 1, 1975.]

On January 27, 1977, the Board of Trustees of the University of the District of Columbia authorized a plan of action for the consolidation of the Federal City College, the District of Columbia Teachers College, and the Washington Technical Institute into the University of the District of Columbia. In July 1977, the Board of Trustees reconfirmed (Resolution 77-21) a two-campus configuration and approved the enrollment ceiling of 13,000 FTE students. This approach allows optimum use of the existing sites and facilities of the University for its immediate short range goals.

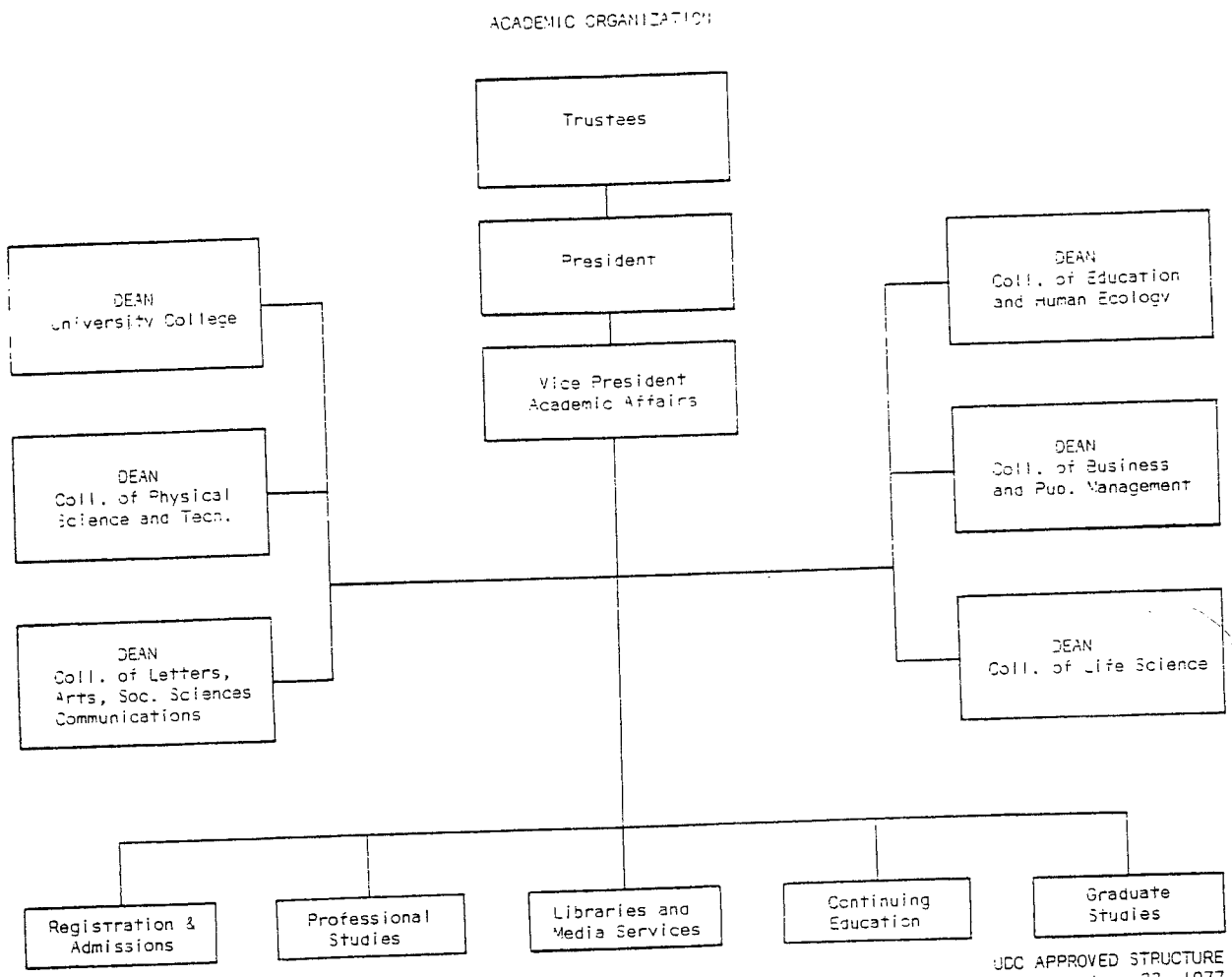
This document represents the consolidation and update of the programs for the physical facility master plan for the Mt. Vernon Square Campus (Federal City College), the Georgia Avenue-Harvard Street Campus (the District of Columbia Teachers College), and the Van Ness Campus (Washington Technical Institute) of the University of the District of Columbia and defined as consolidation task number 10. It is the culmination of one of a series of tasks undertaken as a part of creating a new University for the District of Columbia.

This updated program/plan details a physical configuration that will serve the University into the 1980's. It is not intended to represent the ultimate configuration of the University at maturity. The dynamics of educational change will doubtlessly require that facilities be changed to meet the needs of this young and developing University as it grows toward maturity.

This update of existing plans considers facilities that exist, that are being constructed, or that are being considered for immediate funding. The near future levels of enrollment, educational program offerings, and budgetary limitations have been closely studied and weighed in developing this document.

The Board of Trustees is committed to the development of a comprehensive long range plan in accordance with its legislative mandate and its by-laws.

The programmatic configuration outlined in this document reflects the following academic organization approved by the Board of Trustees.



SUMMARY

The recent establishment of the University of the District of Columbia has reorganized public post secondary education in the District. Three previously separate educational institutions, Federal City College (Mount Vernon Campus), the District of Columbia Teachers College, and the Washington Technical Institute (Van Ness Campus) have been joined to form the University.

Prior to reorganization, both Federal City College and the Washington Technical Institute had prepared physical master plans illustrating expected development of their campuses. Federal City College anticipated a maximum daytime enrollment of 6,400 FTE students. The plan for Washington Technical Institute projected an ultimate daytime enrollment of 8,000 FTE students.

With reorganization, the campuses of these two institutions form the physical and operational base of the University. Enrollment (day and evening) limits now established are:

Mount Vernon	5,627	
Van Ness	7,307	
Total	12,934	FTE Students

Assessment of educational programs in conjunction with factors such as existing facilities, programs, reduced enrollments, service areas, etc. have led to changes in the programs previously planned for each campus. The major changes are:

- 1) All business programs will be located at the Mount Vernon campus.
- 2) All education programs, except for Media Technology will be located at the Van Ness Campus.
- 3) All Physical Education and Recreation programs will be located at the Van Ness Campus.

The Mount Vernon Campus will be the primary base for Liberal and Fine Arts programs. Van Ness will be the primary base for programs in the Life Sciences and in Natural Science and Engineering. Support courses in Departments such as English, History, Mathematics, Political Science, and Psychology will be offered at each campus.

This document sets forth the building space required for the programs of the University. At the Van Ness campus, it appears that the existing facilities, together with those being planned or constructed (previously designated as "Phase II"), will provide a gross area sufficient for the new requirements. Modifications will be required, however, to make the construction suitable for the new programs.

At the Mount Vernon Campus, the gross building area shown on the previous master plan and designated as "Phase I" appears to be adequate to house planned programs.

The building areas projected for each campus are:

Mount Vernon Campus:

Academic Area:	207,885
<u>Support Area:</u>	<u>181,475</u>
Total Net Area:	389,360 NSF

Building Gross Area: 599,015 GSF

Van Ness Campus:

Academic Area:	310,259
<u>Support Area:</u>	<u>189,055</u>
Total Net Area:	499,314 NSF

Building Gross Area: 763,297 GSF (Existing or Under Construction)

In addition, parking garages previously planned for each campus will be required. At Mount Vernon, 229 parking spaces are needed and these will require a garage structure of about 91,600 GSF. At Van Ness, 750 spaces are needed and these will require a garage structure of about 262,500 GSF.

While the two campuses are separated by a distance of several miles, the currently scheduled METRO rail system will provide site to site transit times of about 12 minutes. METRO stations will be located at the boundary of each campus, thus providing rapid and convenient inter-campus movement.

This document is organized in three major sections. The Program Analysis section contains a brief review of the method used to examine educational programs and instruction activities and to project their impact upon building space. A discussion of the manner of projecting space for support services is included. The two remaining major sections detail the building space required at each campus for academic programs and departments, and support service components.